



3434 Route 22 West, Branchburg, New Jersey 08876 USA

ISO 9001:2000

SHIPPED FROM: 80 INDUSTRIAL DRIVE ALPHA, NJ. 08865 TEL: (908) 454-7455

SHIPPED TO: Ohio Lumex  
9263 Ravenna Rd.  
Twinsburg, OH 44087

**CERTIFICATE  
OF  
ANALYSIS**

<b>SGI ORDER # :</b>	0148964	<b>CYLINDER # :</b>	CC-266059
<b>ITEM# :</b>	1	<b>CYLINDER PRES:</b>	2000 psig
<b>CERTIFICATION DATE:</b>	07/15/2009	<b>CYLINDER VALVE:</b>	CGA 680
<b>P.O.# :</b>	JOSEPH8-29-09	<b>PRODUCT EXPIRATION DATE:</b>	07/15/2010
<b>BLEND TYPE:</b>	CERTIFIED		

**ANALYTICAL ACCURACY: +/- 10%**

<b>COMPONENT</b>	<b>REQUESTED GAS GRADE</b>	<b>ANALYSIS</b>
Mercury	10.0 ug/m3	8.8 ug/m3
Air	Balance	Balance

NIST Traceable, Concentration @ 1 Atm. and 20°C

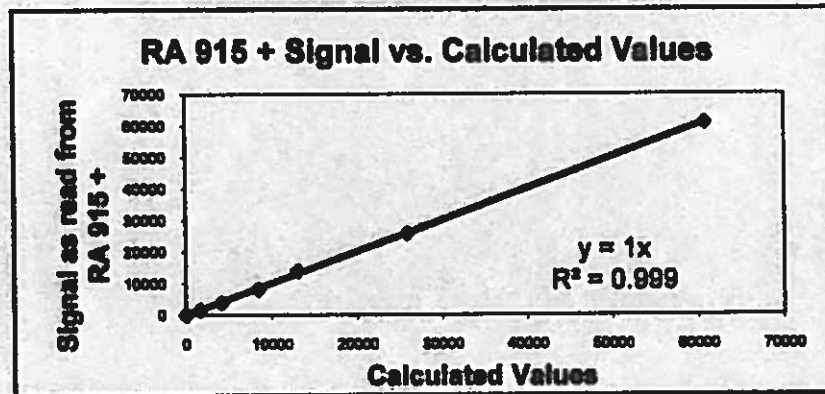
ANALYST:   
Cody Hamlin

DATE: 07/15/2009

**Ohio Lumex Co.**  
 9263 Ravenna Rd. Unit A-3  
 Twinsburg Ohio 44087  
 Tel. 1-888-876-2611  
 Email: Mail@Ohiolumex.com

**Calibration Certificate #899**  
**RA 915 +**

Standard #	Temp C	Calculated value	Signal (10m cell)
1	21.8	0	0
2	21.8	1228	1216
3	21.8	3182	3111
4	21.8	6584	6585
5	21.8	10223	10091
6	21.8	20195	21267
7	21.8	47573	47150



Spectra Gas certified value: 8.8ug/m3      Reading observed: 8.8ug/m3.  
 Calibration Parameter A : 678                      Calibration Parameter B : 34500

**CALIBRATION DATE: 10/19/09    NEXT CALIBRATION DUE: 10/19/10**

**ON THE DATE CALIBRATED, THIS UNIT OPERATED WITHIN SPECIFIED TOLERANCES**

Digital Thermometer: Omega Model HH42, S/N 304890, Due: 11/21/2009  
 Set of Calibrated Saturated Mercury Vapor Cells, Due: 11/21/2009  
 Gas NIST traceable Standard: SpectraGas Calibration cylinder #: CC-266059  
 Concentration: 8.8ug/m3, Analytical Accuracy: +/- 10%. Expiration date: 01/15/2010

SERVICE TECHNICIAN:     J.S.     *L. Simpson*

RECOMMENDATION NOTE: INSTRUMENT SHOULD BE RECALIBRATED EVERY 12 MONTHS OR SOONER, IF EXPOSED TO EXTREME CONDITIONS OR DAMAGE IS SUSPECTED

# CERTIFICATE

The permeation rate of the DYNACAL<sup>®</sup> PERMEATION DEVICE listed below is certified traceable to N.I.S.T. standards.

Chemical Fill	Mercury
Device Type	High Emission - SR
Length / Geometry	8.7cm
Part Number	137-087-0030-856-C50
Method of Certification	Gravimetric
Certification Number	36-13461
Rate	241 ng/min +/- 5 ng/min at 50 degrees C
Note	Duplicate
Date	29-Nov-04
Customer	Ohio Lunumex Co.
Order No.	M832911

By : 

# VICI

**VICI Metronics, Inc.**  
26272 Twelve Trees Lane NW  
Poulsbo, WA 98370  
(360) 697-9199 Fax: (360) 697-6682

**Ohio Lumex Co.**

9263 Ravenna Rd, Unit A-3

Twinsburg Ohio 44087

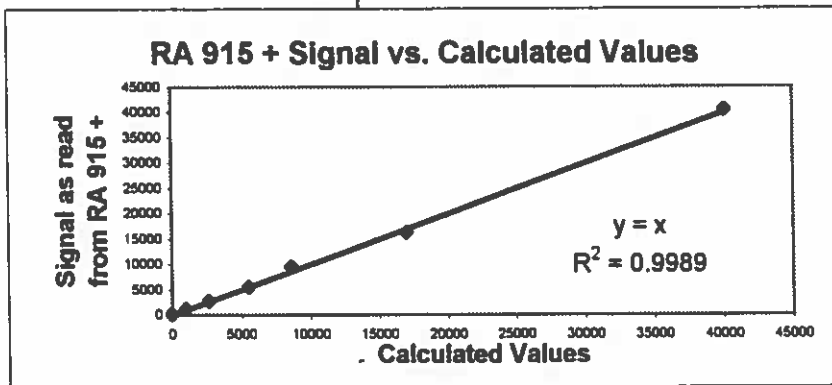
Tel. 1-888-876-2811

Email: Mail@Ohiolumex.com

**Calibration Certificate #899**

**RA 915 +**

Standard #	Temp C	Calculated value	Signal (10m cell)
1	20.8	0	0
2	20.8	1032	1010
3	20.8	2684	2651
4	20.8	5546	5514
5	20.8	8615	9338
6	20.8	17024	16159
7	20.8	40097	40315



Dynacalibrator gas value: 24.4ug/m3

Reading observed: 24.4ug/m3.

**CALIBRATION DATE:** 04/03/07 **NEXT DUE:** 04/03/08

Calibration Parameter A : 999

**RA 915 UNIT # :** 899

Calibration Parameter B : 50000

**ON THE DATE CALIBRATED, THIS UNIT OPERATED WITHIN SPECIFIED TOLERANCES**

RECALIBRATED EVERY 12 MONTHS OR SOONER, IF EXPOSED TO EXTREME CONDITIONS OR DAMAGE IS SUSPECTED

**Instrumentation and Standards used for calibration**

**Gas Standard:** Certified Calibration Gas-Spectragas cylinder: CC-187561,

Concentration: 8.5ug/m3, Analytical Accuracy: +/- 10%. Due: 07/26/2007

**Digital Thermometer:** Omega Model HH42, S/N 304890, Due: 10/15/2007

**Set of Calibrated Saturated Mercury Vapor Cells,** Due: 10/15/2007

**Gas Standard:** Certified VICI Metronics permeation cells, Dynacalibrator 500 Due: 10/15/2007

Analytical Accuracy: +/- 10%

**SERVICE TECHNICIAN:** J.S.

**RECOMMENDATION NOTE:** INSTRUMENT SHOULD BE RECALIBRATED EVERY 12 MONTHS, OR SOONER, IF EXPOSED TO EXTREME CONDITIONS OR DAMAGE IS SUSPECTED